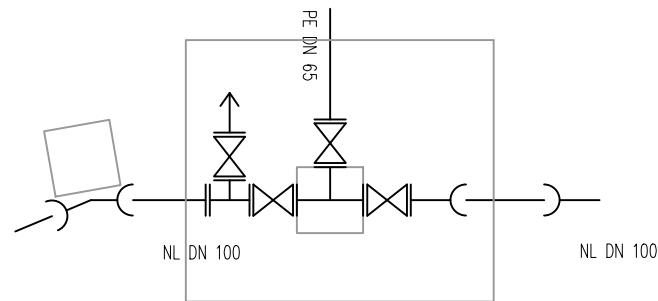
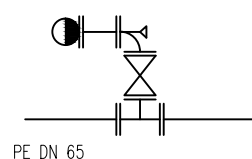


19 + **127** Odcepní jašek, horizontalni lom 17,51°, vertikalni lom 7°



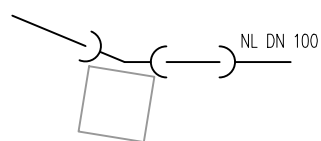
- MMK DN 100mm, $\alpha=22,50^\circ$ kos 1
- KRATKA CEV DN 100mm, L=1000mm kos 1
- E DN100mm kos 1
- ZOBATA SPOJKA DN 65mm kos 1
- T DN100/65mm kos 1
- T DN100/80mm kos 1
- EV zasun \varnothing 100mm kos 2
- EV zasun \varnothing 80mm kos 1
- EV zasun \varnothing 65mm kos 1
- odzračevalni ventil \varnothing 80mm kos 1
- F DN100mm, L=1000mm kos 1

20 Podzemni hidrant



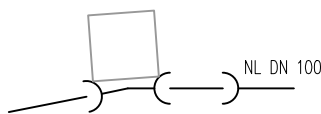
- ZOBATA SPOJKA DN 65mm kos 2
- T DN 65/50mm kos 1
- EV zasun \varnothing 50mm kos 1
- N DN50mm kos 1
- PODZEMNI HIDRANT DN50mm kos 1
- OKROGLA CESTNA KAPA kos 1
- OVALNA CESTNA KAPA kos 1

128 Horizontalni lom 8,92° in vertikalni lom 10°



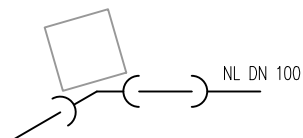
- MMK DN 100mm, $\alpha=22,50^\circ$ kos 1
- KRATKA CEV DN 100mm kos 1

129 Horizontalni lom 11,25°



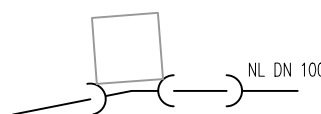
- MMK DN 100mm, $\alpha=11,25^\circ$ kos 1
- KRATKA CEV DN 100mm kos 1

130 Horizontalni lom 26,50°



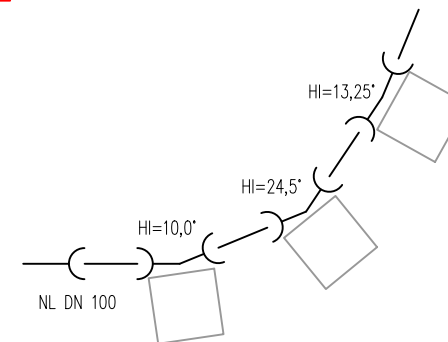
- MMK DN 100mm, $\alpha=30,0^\circ$ kos 1
- KRATKA CEV DN 100mm kos 1

131 Horizontalni lom 10,0°



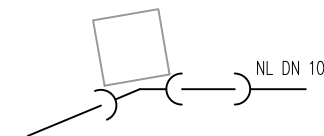
- MMK DN 100mm, $\alpha=11,25^\circ$ kos 1
- KRATKA CEV DN 100mm kos 1

132 Horizontalni lom 10,0°+24,5°+13,25°



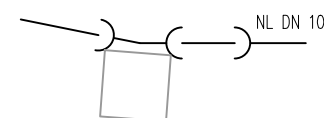
- MMK DN 100mm, $\alpha=11,25^\circ$ kos 2
- MMK DN 100mm, $\alpha=22,50^\circ$ kos 1
- KRATKA CEV DN 100mm kos 3

133 Horizontalni lom 22,48°



- MMK DN 100mm, $\alpha=22,5^\circ$ kos 1
- KRATKA CEV DN 100mm kos 1

134 Horizontalni lom 13,25°



- MMK DN 100mm, $\alpha=11,25^\circ$ kos 1
- KRATKA CEV DN 100mm kos 1

| | | |
|--|---|--|
| <p>biro obala</p> <p>Biro Obala, d.o.o. Projektiranje in inženiring, d.o.o. Progettazione ed engineering, s.r.l. Ulica Stare pošte 3, 6000 Koper Tel: +386 5 66 38 700 Fax: +386 5 66 38 702 Matična številka: 2225336000 Evidenčna številka IZS 2645</p> | investitor/naročnik Občina Kanal ob Soči Trg Svobode 23 5213 Kanal | odgovorni projektant: Aleš Bucaj, univ.dipl.inž.grad. Identifikacijska številka IZS G-3009 |
| | objekt / lokacija: Vodovod do naselij Hoje, Testeni, Zavrh | projektant: Andreja Rener, univ.dipl.inž. vod. in kom. inž. |
| vrsta projekta: PZI | vrsta načrta: Načrt vodovoda | merilo: list: 3.5.18.2 |
| št. načrta: 65/16-1 | datum: januar 2017 | del načrta/vrsta risbe: Montažne sheme: Hoje-Testeni |